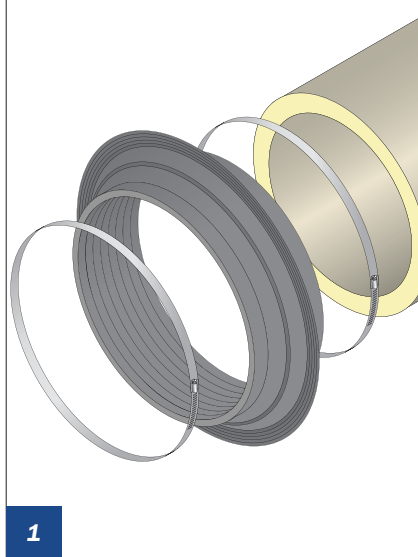
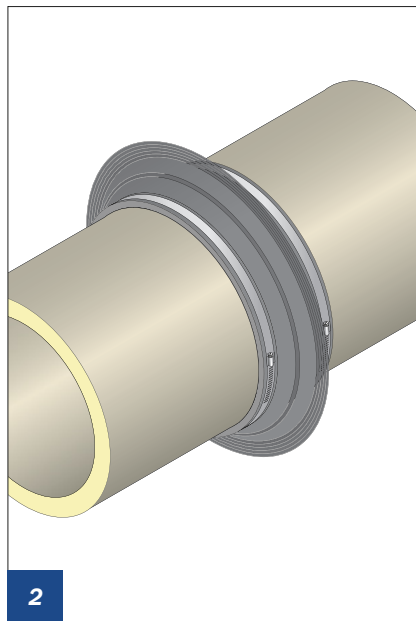


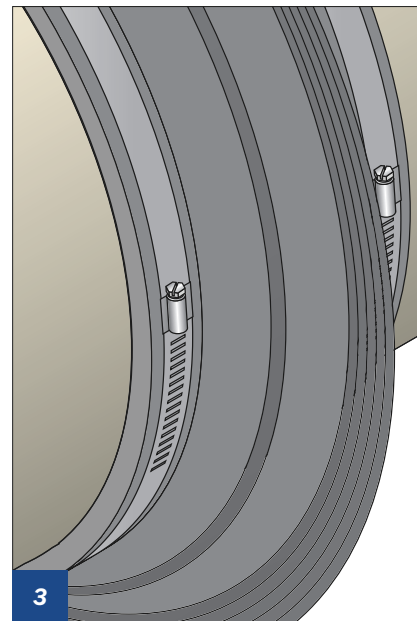
Installation wall collar



Push the wall collar onto the LAVANTUS® air duct with both clamping rings.

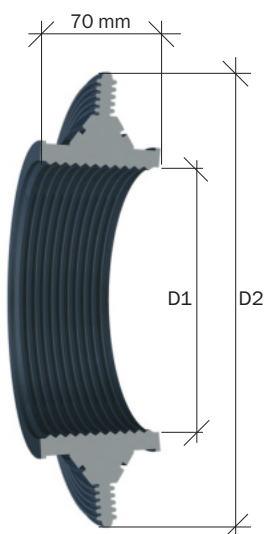


Following this adjust the wall collar according to the structural conditions.



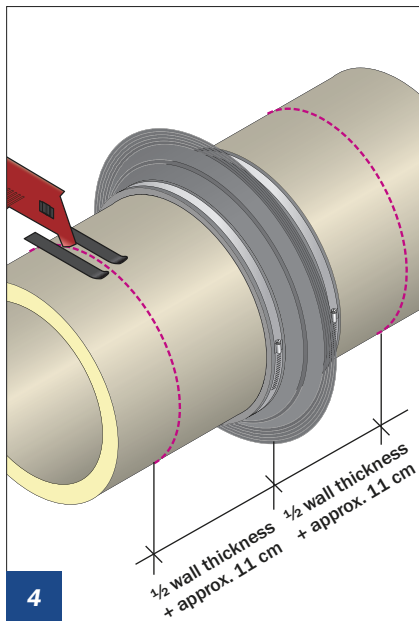
By tightening both clamping rings the wall collar is fixed to the duct.

Tip:
Lubricants can be used to make the pushing easier.

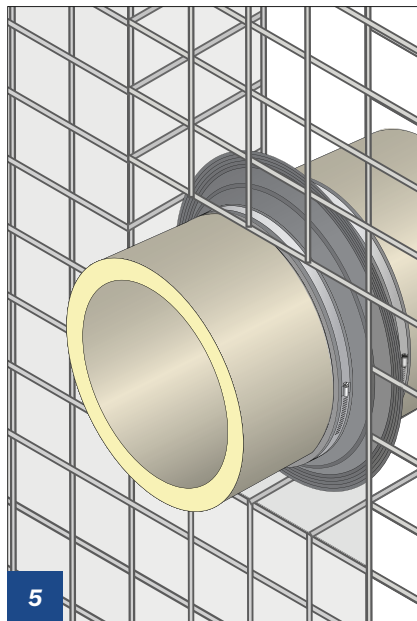


| LAVANTUS® – underground installed air duct | | LAVANTUS® wall collar | |
|---|----------------------|--|---|
| Nominal diameter d in mm | Duct outside Ø in mm | D1 Inner dimension wall collar Ø in mm | D2 External dimension wall collar Ø in mm |
| 200 | 270 | 265 | 359 |
| 250 | 320 | 315 | 409 |
| 300 | 370 | 365 | 459 |
| 355 | 455 | 450 | 544 |
| 400 | 500 | 495 | 589 |
| 500 | 600 | 595 | 689 |
| 600 | 700 | 695 | 789 |
| 710 | 810 | 805 | 899 |
| 800 | 900 | 895 | 989 |
| 900 | 1000 | 995 | 1089 |
| 1000 | 1100 | 1095 | 1189 |
| 1250 | 1370 | 1365 | 1459 |

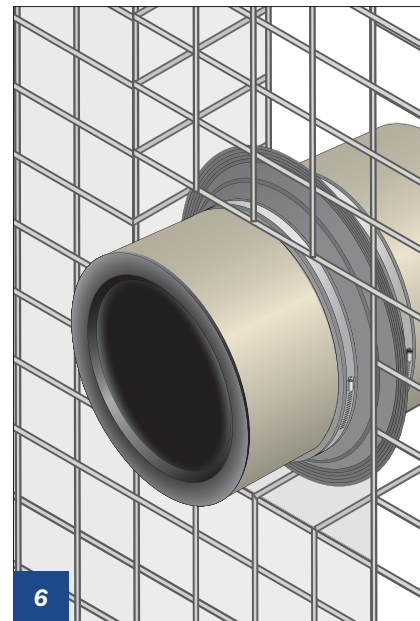
The wall collar can be used horizontally as well vertically (e.g. in base plates).



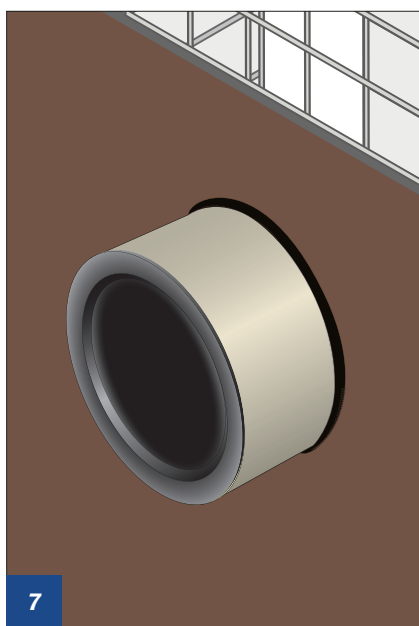
Shorten the duct piece in front of and behind the wall collar and insert it into the reinforcement at appropriate position of the wall.



This way the air duct including the wall duct is placed into the reinforcement, so that it protrudes at least 11 cm on both sides of the completed wall.



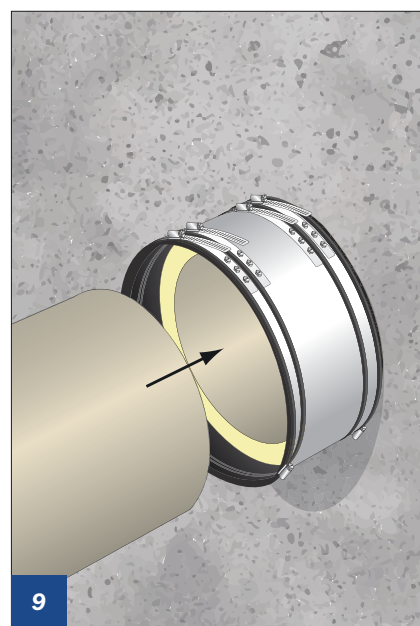
We recommend to protect the duct with an end stopper from damage or soiling during the construction time.



Install the casing with an omission for the duct, backfill it and let it set.



Remove casing and end stopper and slide LavantusGrip-cuff onto the duct after that (see p. 5.20).



Slide pursuing duct into cuff and tighten the tightening straps.